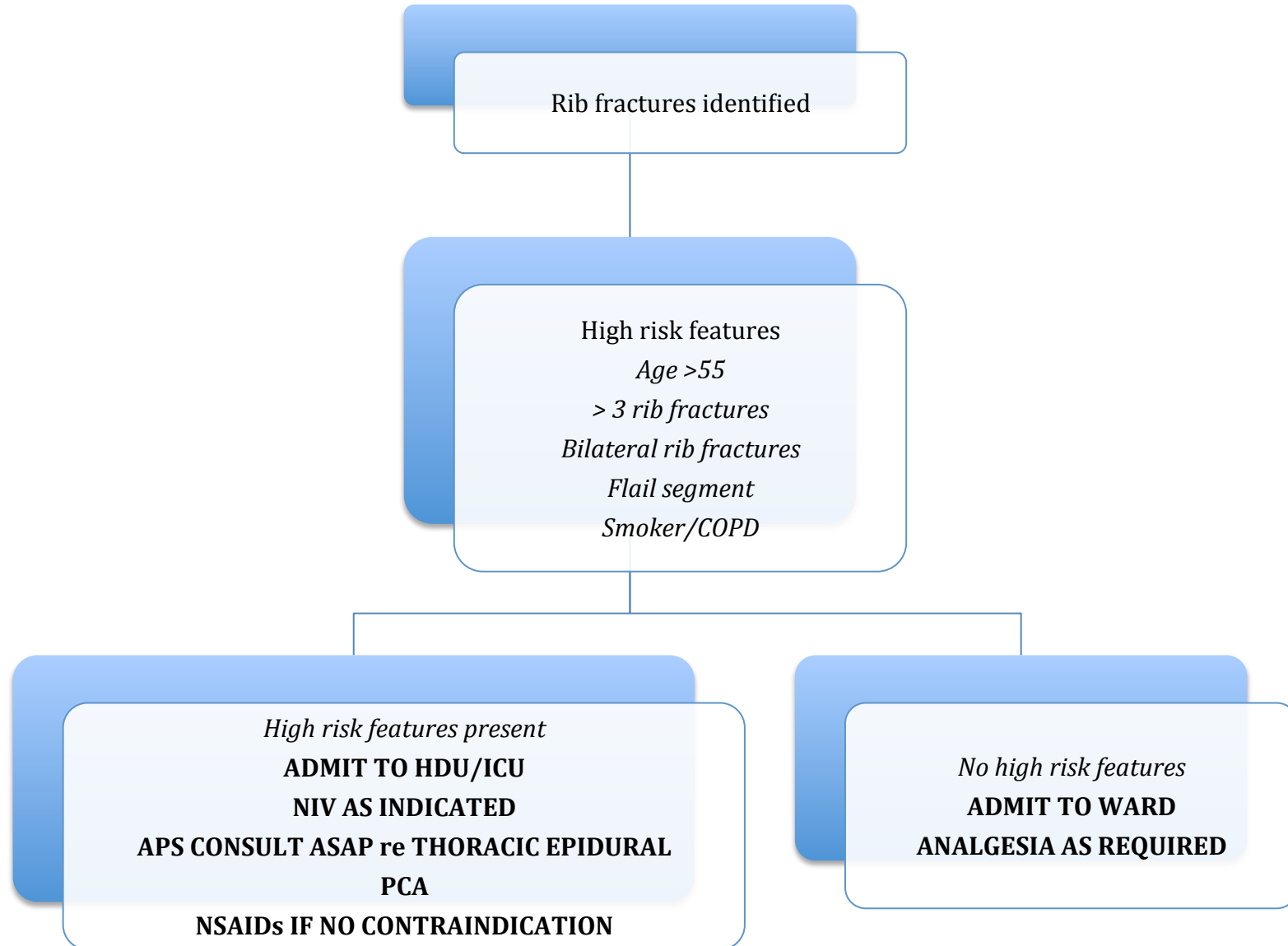
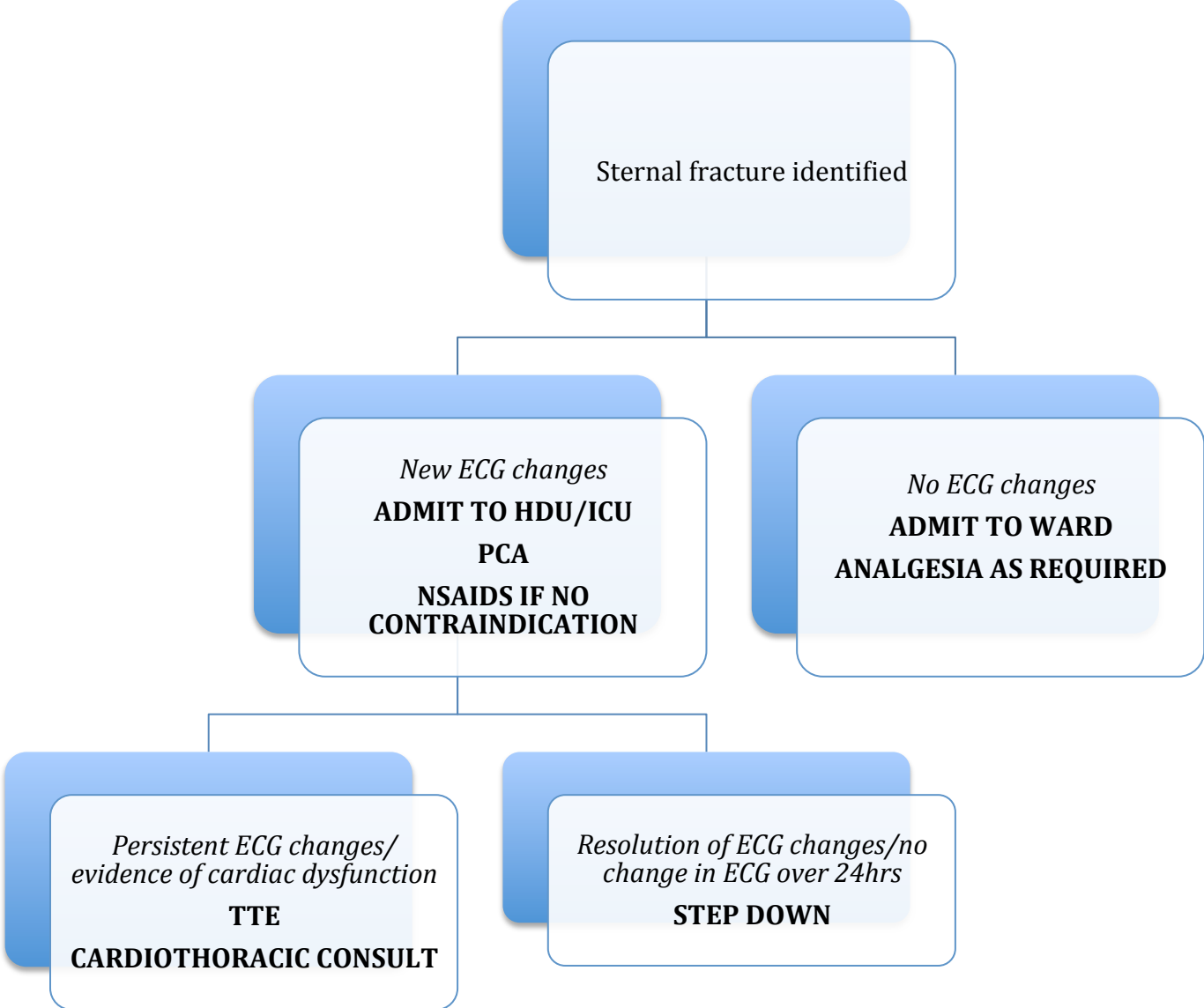


# MANAGEMENT OF RIB FRACTURES



- NIV = Non Invasive Ventilation, APS = Acute Pain Service, PCA = Patient Controlled Analgesia

# MANAGEMENT OF STERNAL FRACTURE/BLUNT CARDIAC INJURY



- TTE = transthoracic echocardiogram

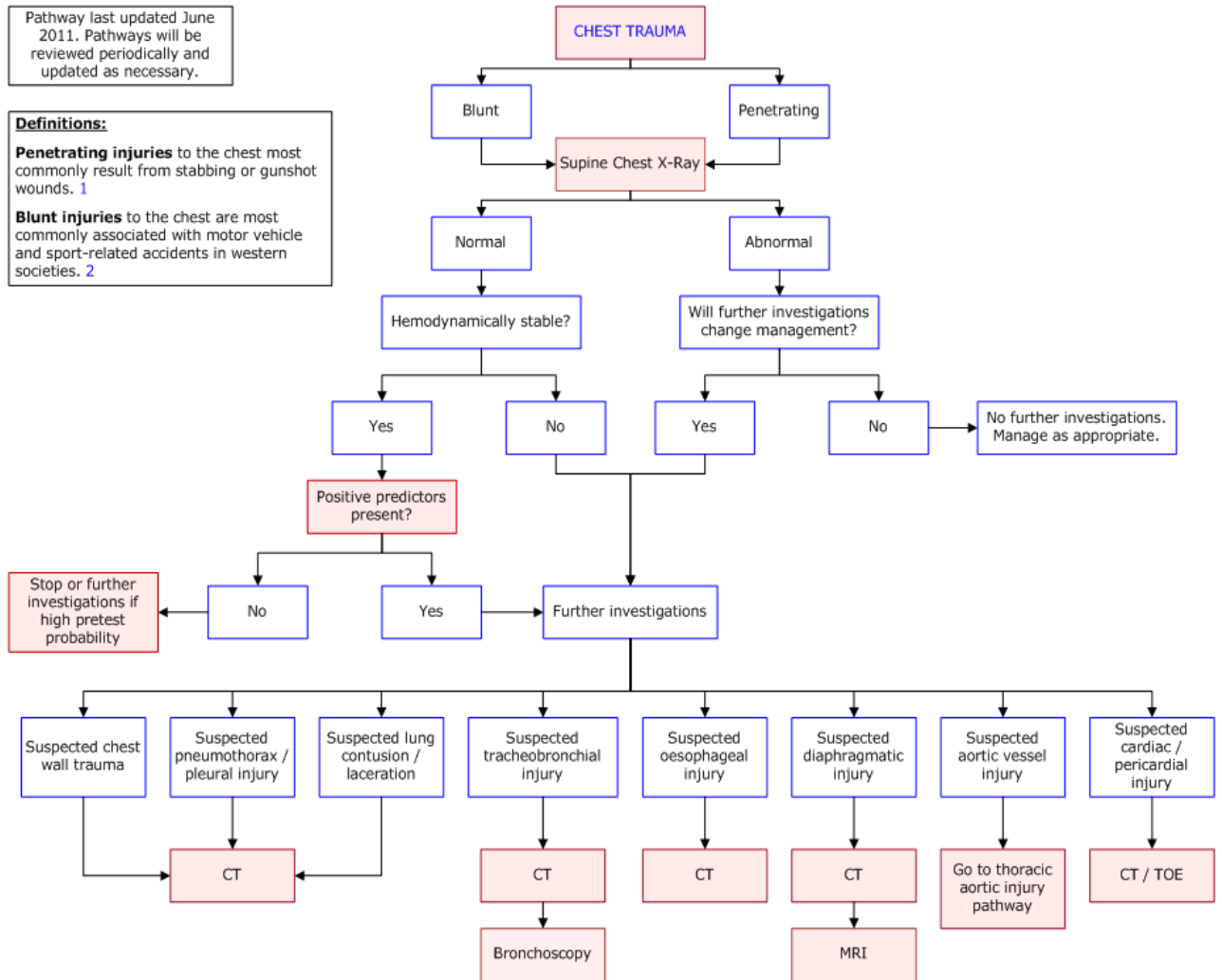
# THORACIC INJURY IMAGING PATHWAY

Pathway last updated June 2011. Pathways will be reviewed periodically and updated as necessary.

**Definitions:**

**Penetrating injuries** to the chest most commonly result from stabbing or gunshot wounds. <sup>1</sup>

**Blunt injuries** to the chest are most commonly associated with motor vehicle and sport-related accidents in western societies. <sup>2</sup>



# TRAUMATIC AORTIC INJURY IMAGING PATHWAY

